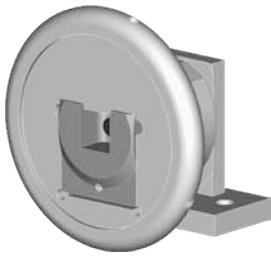


## 2.0 Overview Safety chucks



<i>Model</i>	<i>max. beam weight / kg</i>	<i>max. torque / Nm</i>	<i>Square bar / mm</i>	<i>Standard square bar / mm</i>	<i>Type C</i>	<i>Type VT</i>	<i>Info</i>
<b>Mini</b>	150	40	14-20	20	x		2.00
<b>19-25</b>	400	120	19-25	25	x		2.10
<b>22-30</b>	800	180	22-30	30	x	x	2.20
<b>30-40</b>	1600	350	30-40	40	x	x	2.30
<b>40-50</b>	2800	1100	40-50	50	x	x	2.40
<b>50-80</b>	7000	2350	50-80	80		x	2.50
<b>80-120</b>	12000	10000	80-120	120		x	2.70
<b>120-180</b>	22000	20000	120-180	180		x	2.80
<b>170-230</b>	64000	41000	170-230	230		x	2.90

